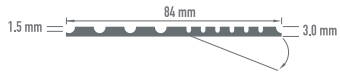
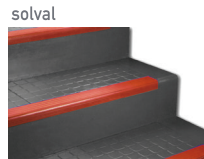


solval | classica tread cerama tread | deco tread

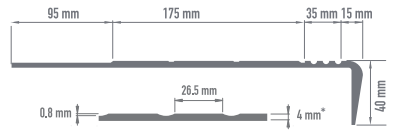
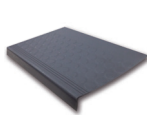
- One piece stair and nose (cerama tread | deco tread | classica tread)
- Sheet (solval)
- Suitable for extremely heavy traffic areas
- Extreme durability
- Ultra resistant stair nose. No need for caulking (cerama tread | deco tread | classica tread)
- Studded surface finish (cerama tread | deco tread | classica tread)
- Ribbed surface (solval)
- Very fast installation
- Low VOC certified material
- CA 01350 compliant
- May contribute with points to LEED program
- Free of PVC and halogens
- Cigarette burn resistant
- 25 colors

rubber stair tread and rubber stair nose for extremely heavy traffic areas with studded surface and solid color design.



Art.				
2321-33	Double backing 3.0 mm	8.4 x 1000 cm	1 sheet	0.4 kg/ml

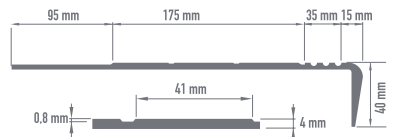
classica tread



Art.			
1221-68	Homogeneous 4.0 mm*	122 x 32 x 4 cm	10 units 2.2 kg/uni

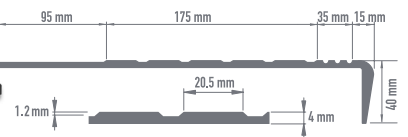
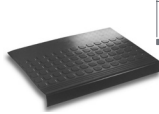
* Upon request 5.0 mm

cerama tread



Art.			
1121-68	Homogeneous 4.0 mm	122 x 32 x 4 cm	10 units 2.2 kg/uni

deco tread



Art.			
1421-68	Homogeneous 4.0 mm	122 x 32 x 4 cm	10 units 2.4 kg/uni

0044 AMARILLO - C ESPACIAL	0052 MAR - C	0045 CRUDO - C	0048 DURAZNO - C	0055 PERLADO - C
0050 VERDE CROMO - D	0053 TOPACIO - C	0033 BEIGE - C	0021 TERRACOTA - B	0061 LACAR - C
0001 ROJO - D	0054 MUSGO - C	0046 TOSTADO - C	0029 MODENA - C	0007 GRIS - B
00301 GLACIAR - C	0034 ADRIATICO - C	0018 CHOCOLATE - B	0049 COLA - D	0025 CHARCOAL - B
0051 LAVANDA - C	0028 COBALTO - D	0047 CAFE - C	0019 BLACK - A	0056 PELTRE - B